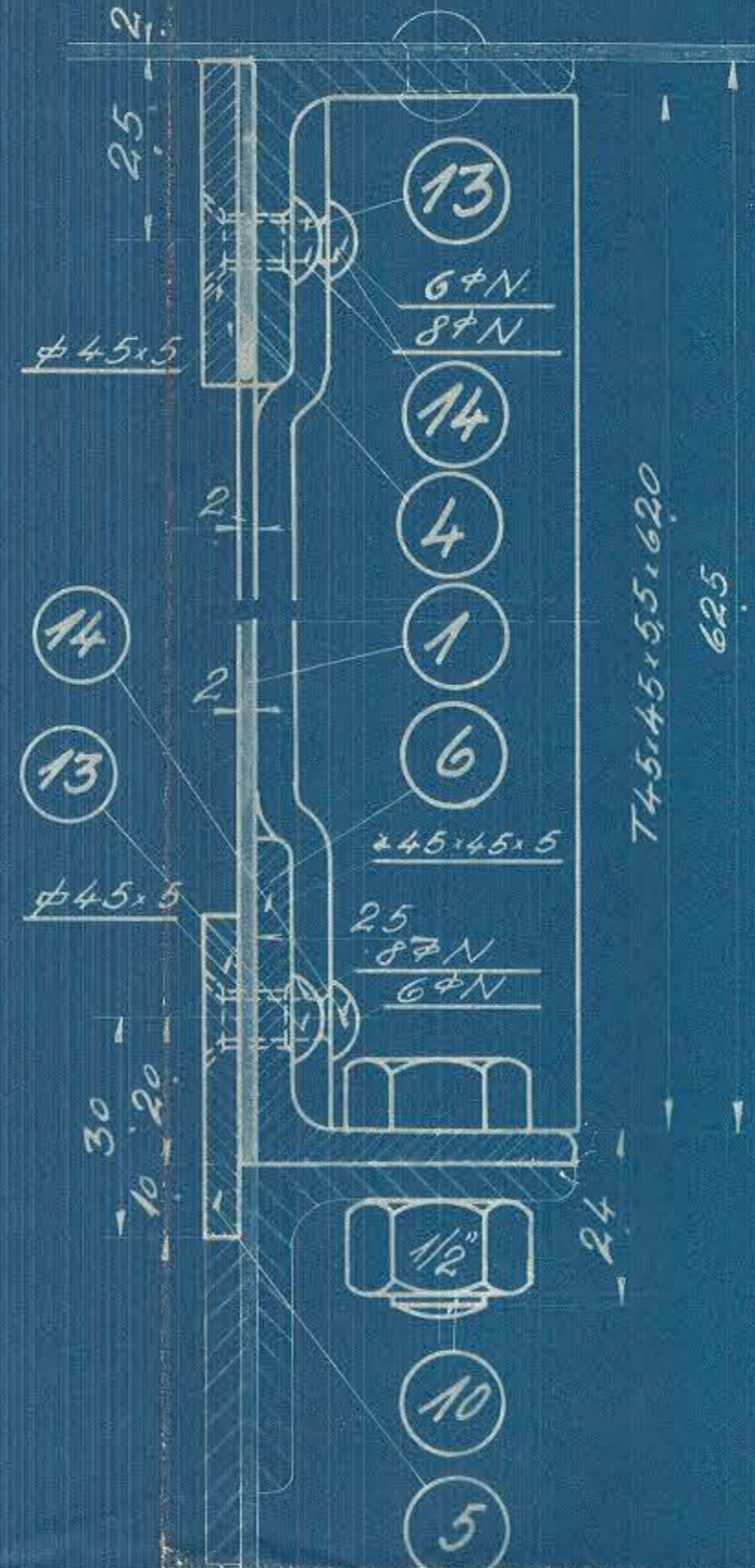
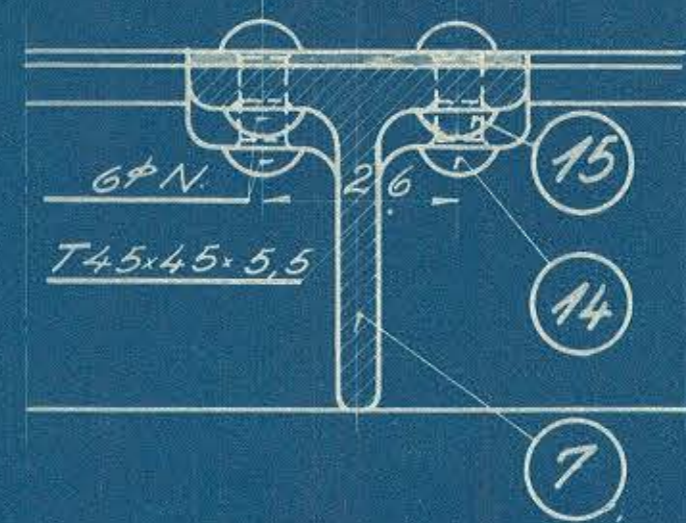


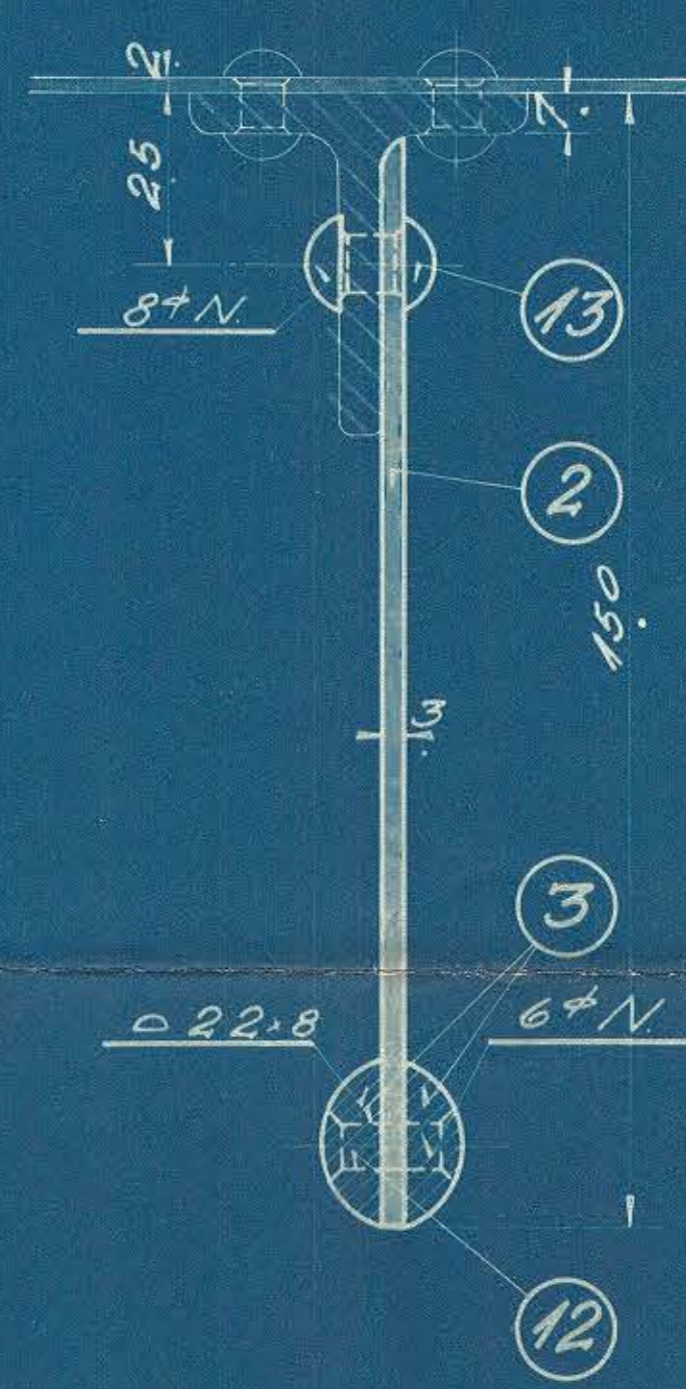
Snit A-A



Snit B-B

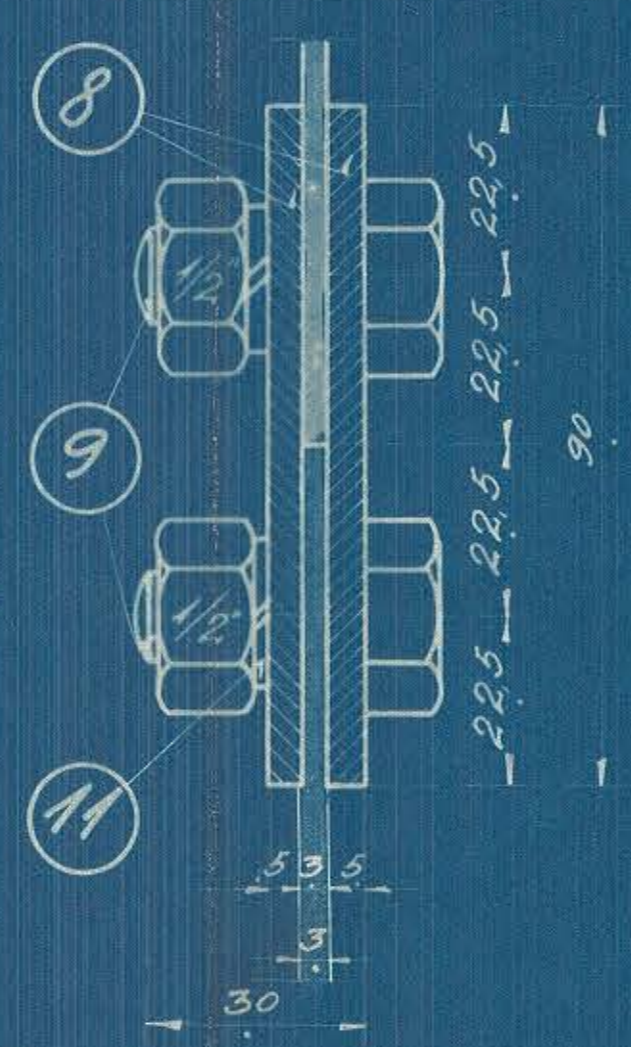


Snit C-C



Opmærkes og bores efter Pladen Mrk 1

Snit D-D



55136

Q	Q	Q	Q	Q	Q	Q
1	2	Garl	Flussjern	2.5H	2920x650x2	
2	1	Afslutning	"	"	2900x650x3	
3	2	kantjern	"	∅	22x8x5400	
4	2	Bøjet Fladjern	"	∅	45.5x6800	
5	2	Lige	"	2812lg	∅ 45.5x5650	
6	2	do	Vinkel	2812"	* 45.45.5x5650	
7	2	do	T Jern	"	T 45x45x551280	
8	4	Laske	"	"	∅ 90x5x900	
9	12	6kt Bolt m. Møtrik	"	"	"	Magas
10	24	do	"	1 1/2:30	"	"
11	12	Fjederstive	1/2"	"	Federstaa	"
12	25	Nagle	6x25	"	Nittejern	"
13	250	do	8x20	"	"	"
14	8	do	6x25	"	"	"
15	32	do	"	x16	"	"
16						

DATE	FORANDRINGER	INDEX
A/S FRICHS AARHUS		
Dele til Tag		
Diesel-ef. 440HK Motorloko		
TEGNET AF	MAALESTOK	TEGNING NR.
REVIDERT AF	1:1	128L-1560
DATO	17/10-1933	